

The Life of a New Brunswicker

Population NB 2022

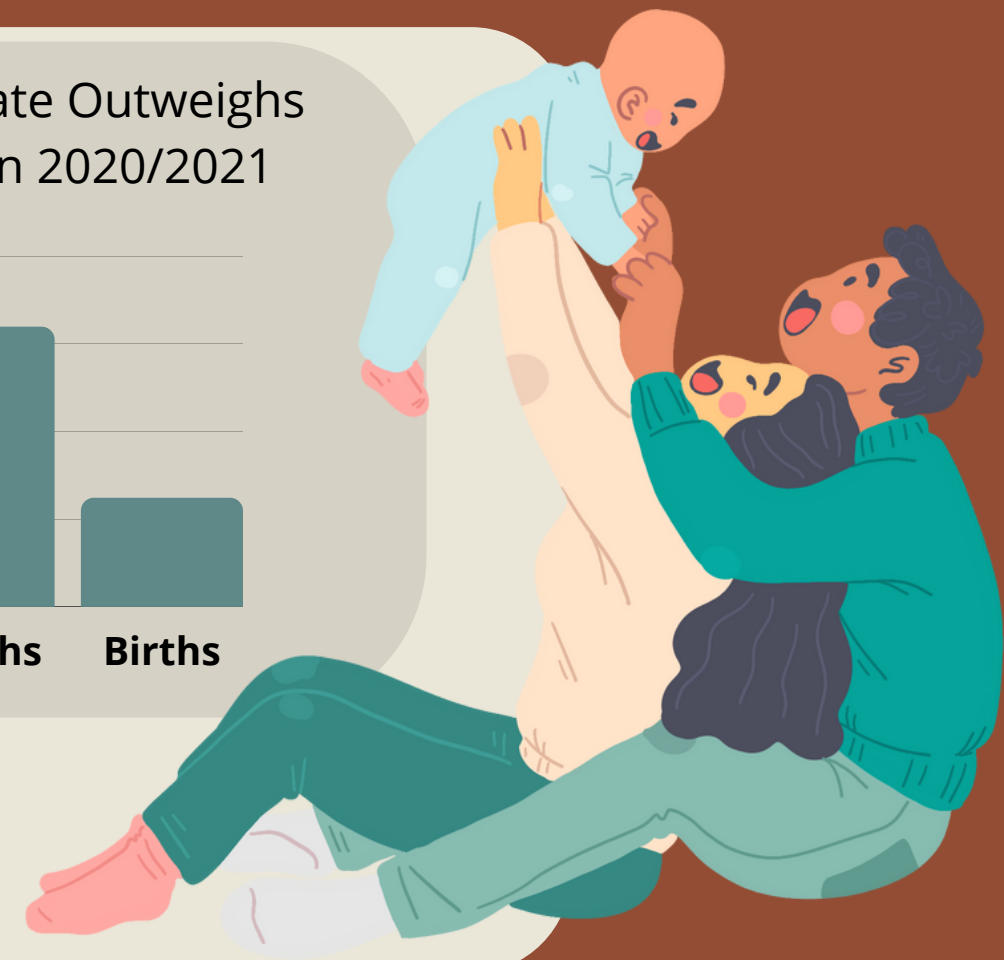
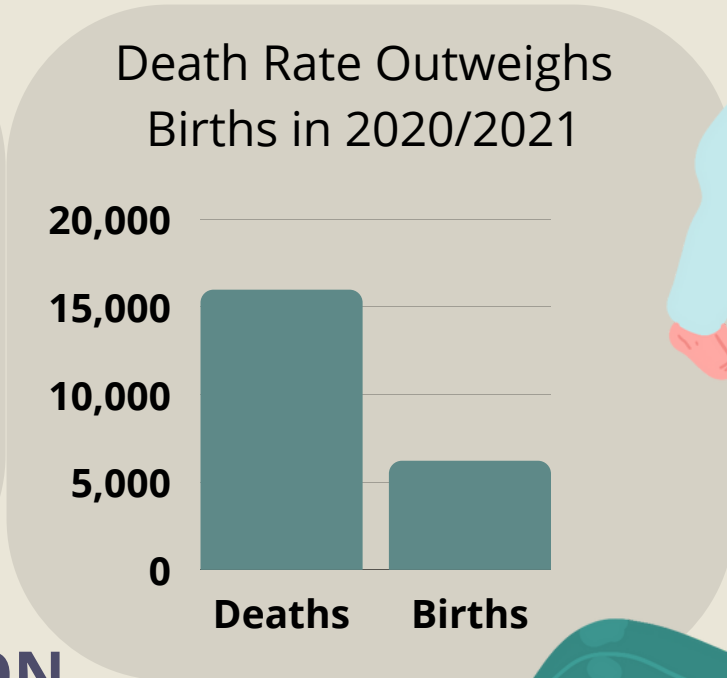
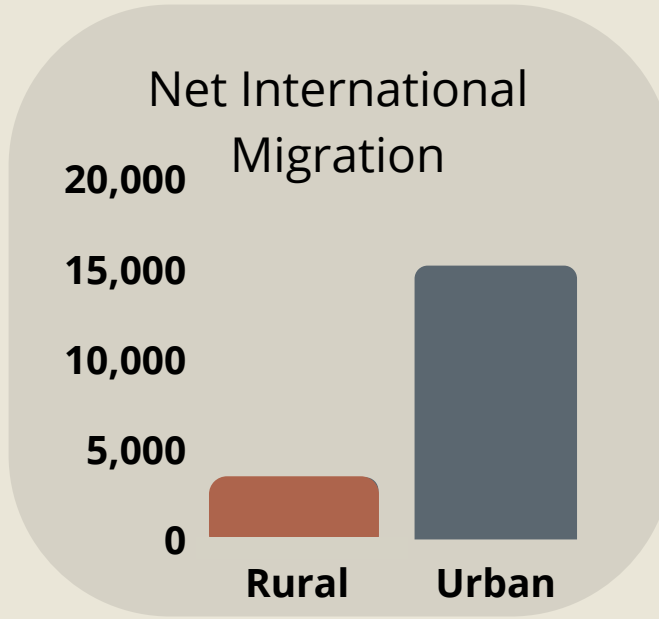
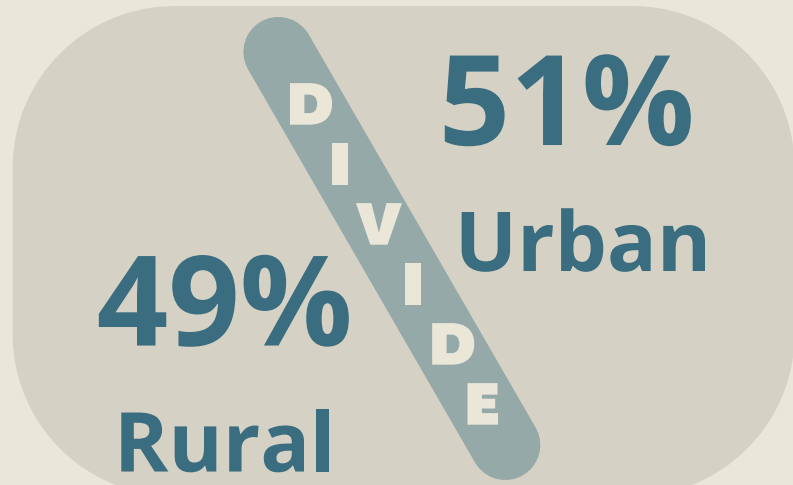
PopNB Studies how changing population dynamics are shaping New Brunswick; specifically looking at urban and rural discrepancies

URBAN

RURAL

Movement

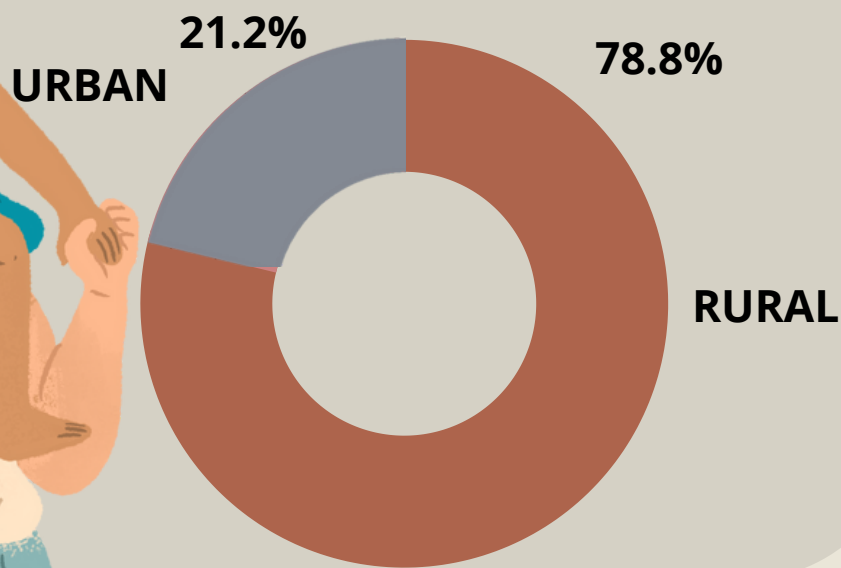
New Brunswick's Population Hit an All-Time High in **April 2022** with **800,000 Citizens!**



Immigration is the **Primary Form of Population Growth** in NB



78.8% of Property Owners in Core Housing Need Live in Rural Areas



HOUSING AFFORDABILITY

Cost of Living

INCOME AND JOB AVAILABILITY

The **Median Income** in NB Grew by **\$2910** from 2017 to 2020

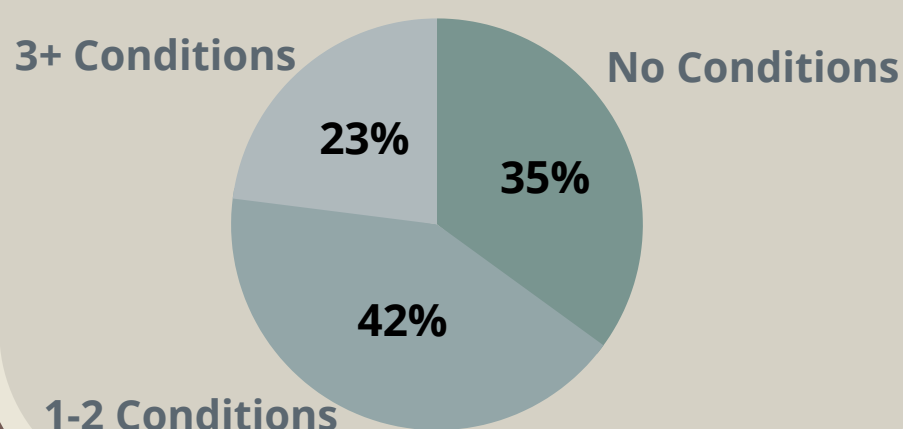
Job Availability Only Rose by **+0.34%** from 2017 to 2021

Median Annual Salaries are Significantly **Higher in Urban** Areas

Essential Services

HEALTHCARE

65% of New Brunswickers Live With at Least 1 Chronic Condition

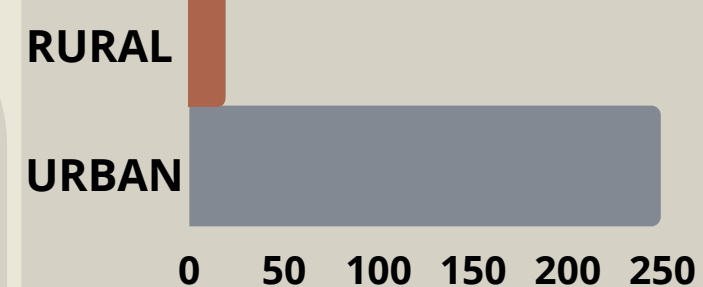


Employment Insurance Beneficiaries are **3x HIGHER** in **Rural** Areas

Rural Households Spent Over **\$2000 More on Transportation** in 2020 than Urban

TRANSPORTATION

Public Transportation Assets



Assets Include Municipality-Owned Buses and Transit Stations in 2020



[View the Full Report](#)